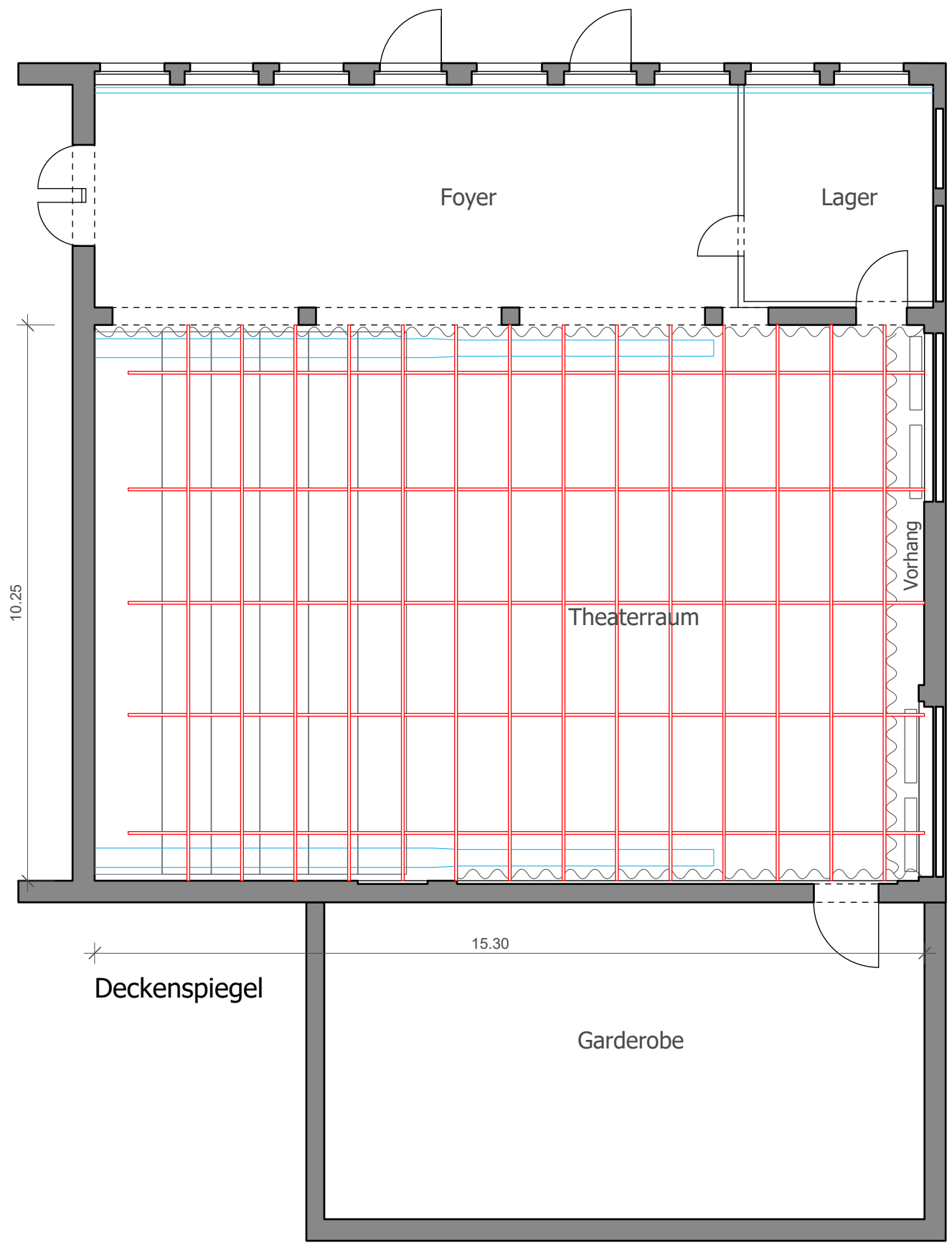
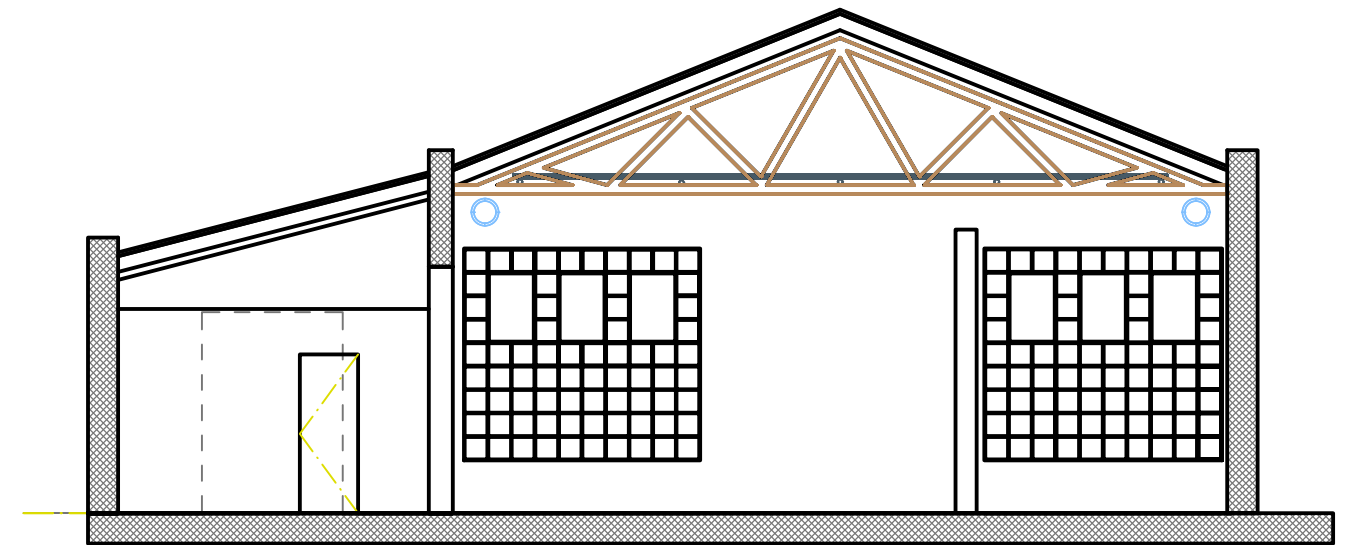
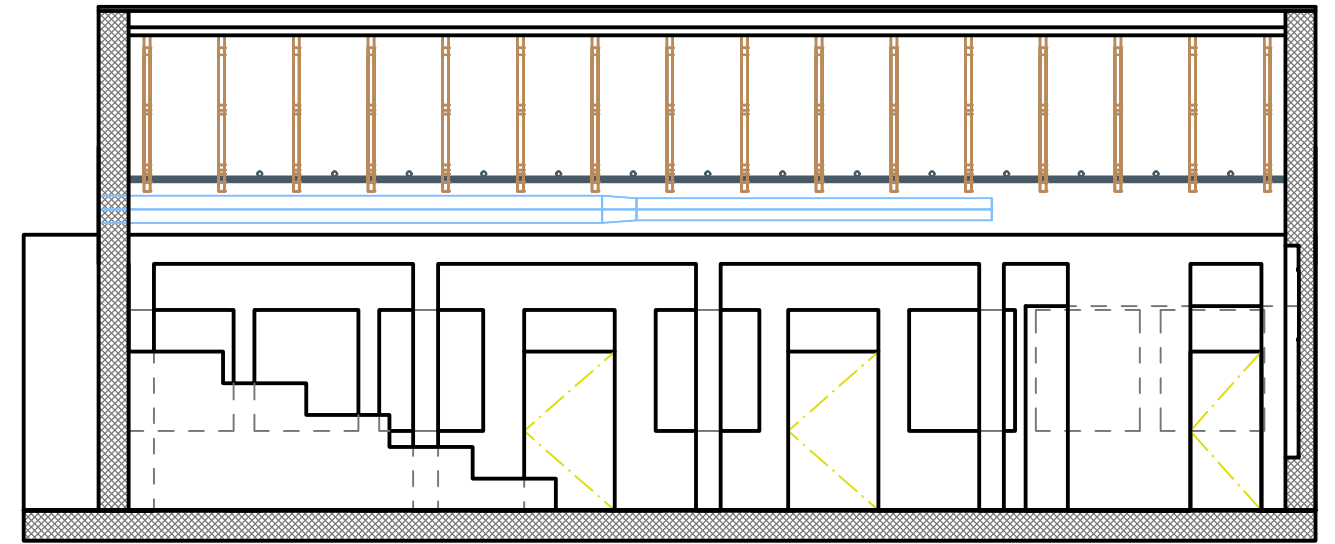
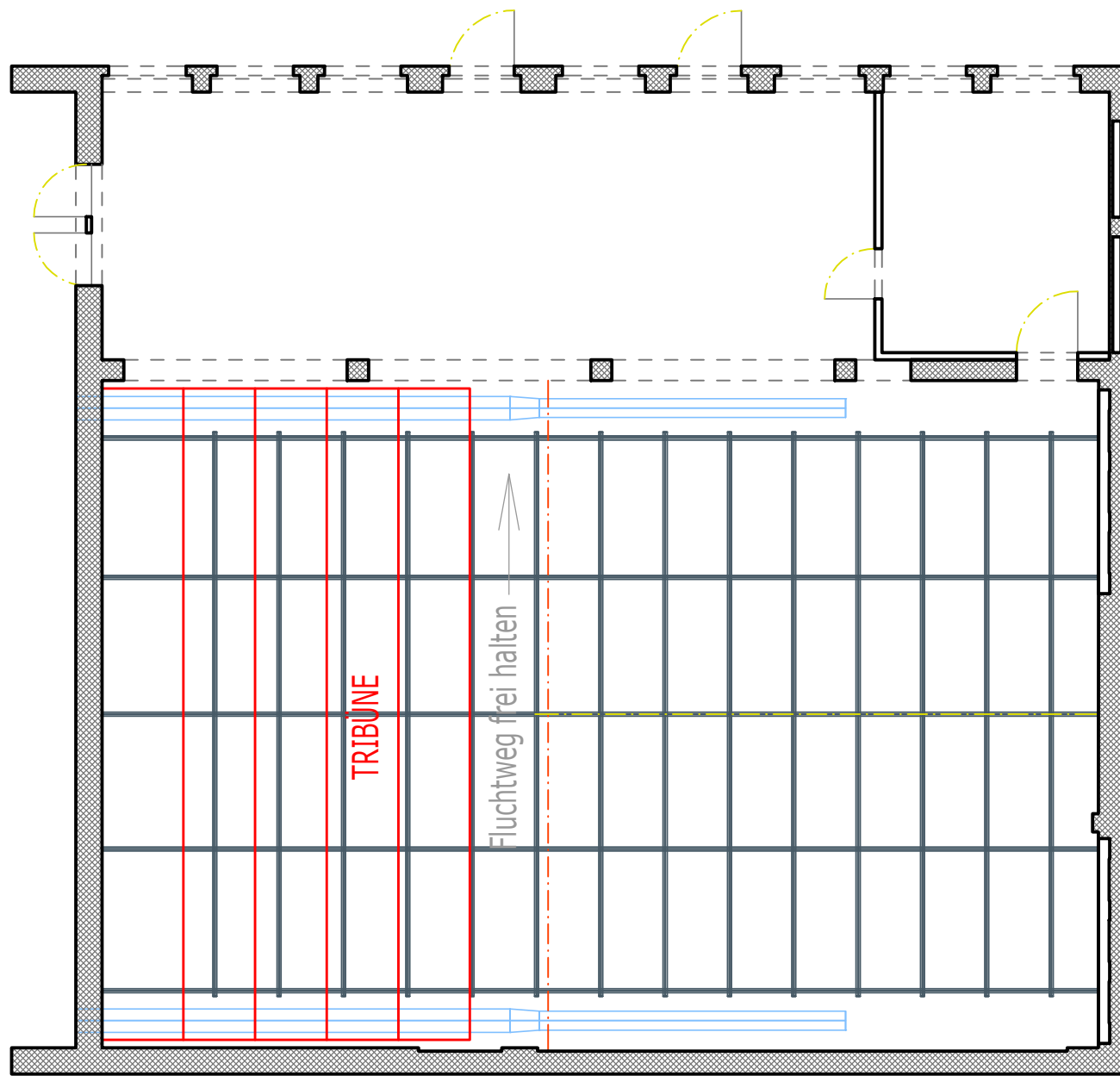


Längsschnitt



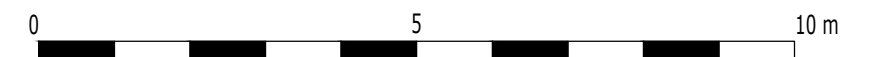
Objekt ROTE FABRIK FABRIKTHEATER			Rote Fabrik Seestrasse 395 Postfach 1073 8038 Zürich
Plan DECKENSPIEGEL / LÄNGSSCHNITT			
Masstab 1:100	Datum 27.03.19	Plan Nr. IGRF_FT_DS_01	
Format A 3	Gezeich. TM	Kontakt www.rotfabrik.ch	

Stüctitel

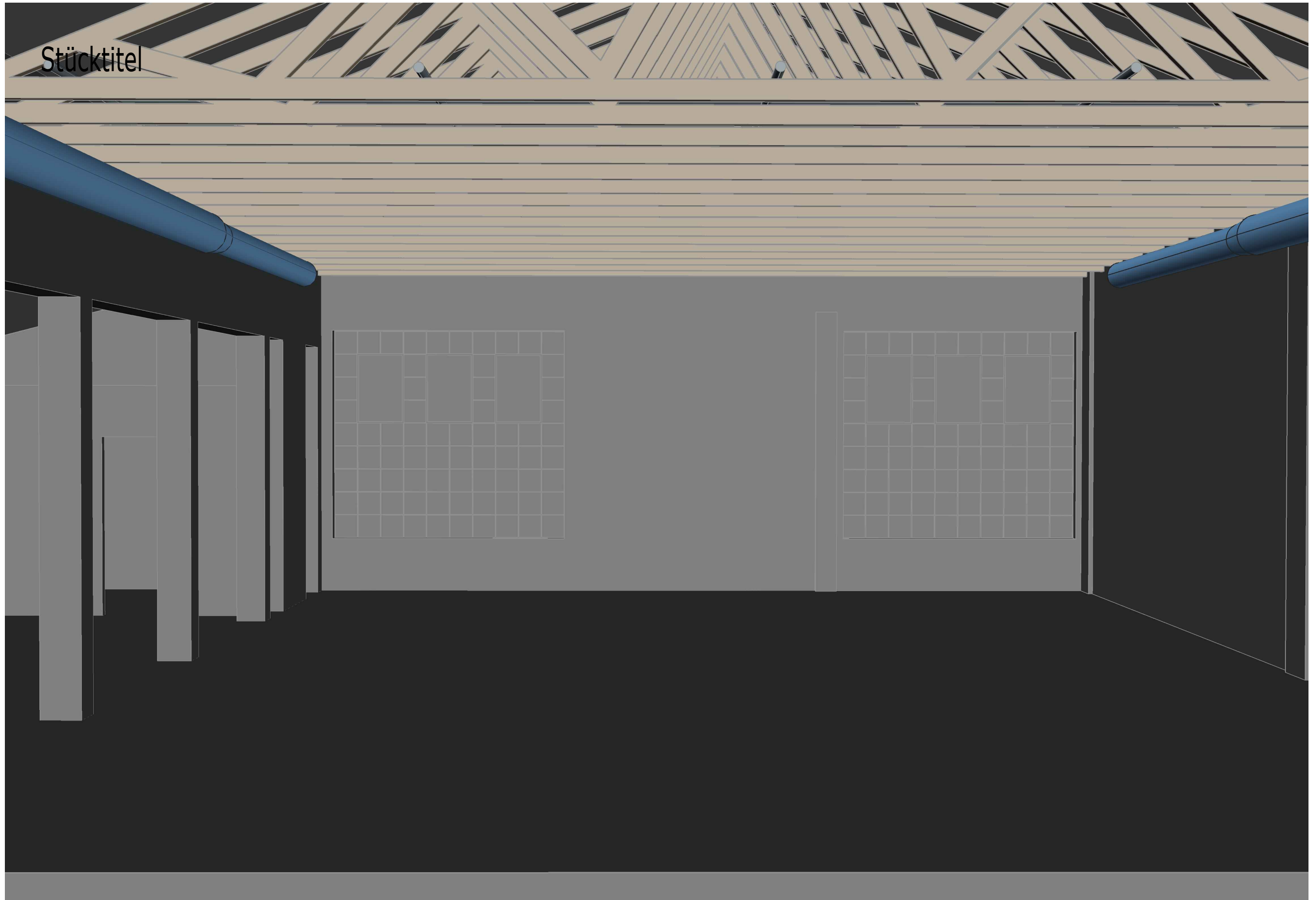


Objekt: Rote Fabrik Fabriktheater			Rote Fabrik Seestrasse 395 Postfach 1073 8038 Zürich
Schnitte: Grundriss und Schnitte			
Masstab: 1: 100	Datum: 12 Dez. 2018/13:38	01	
Format: A 3	Gezeich.: dh	CAD-Format: AutoCAD 17	

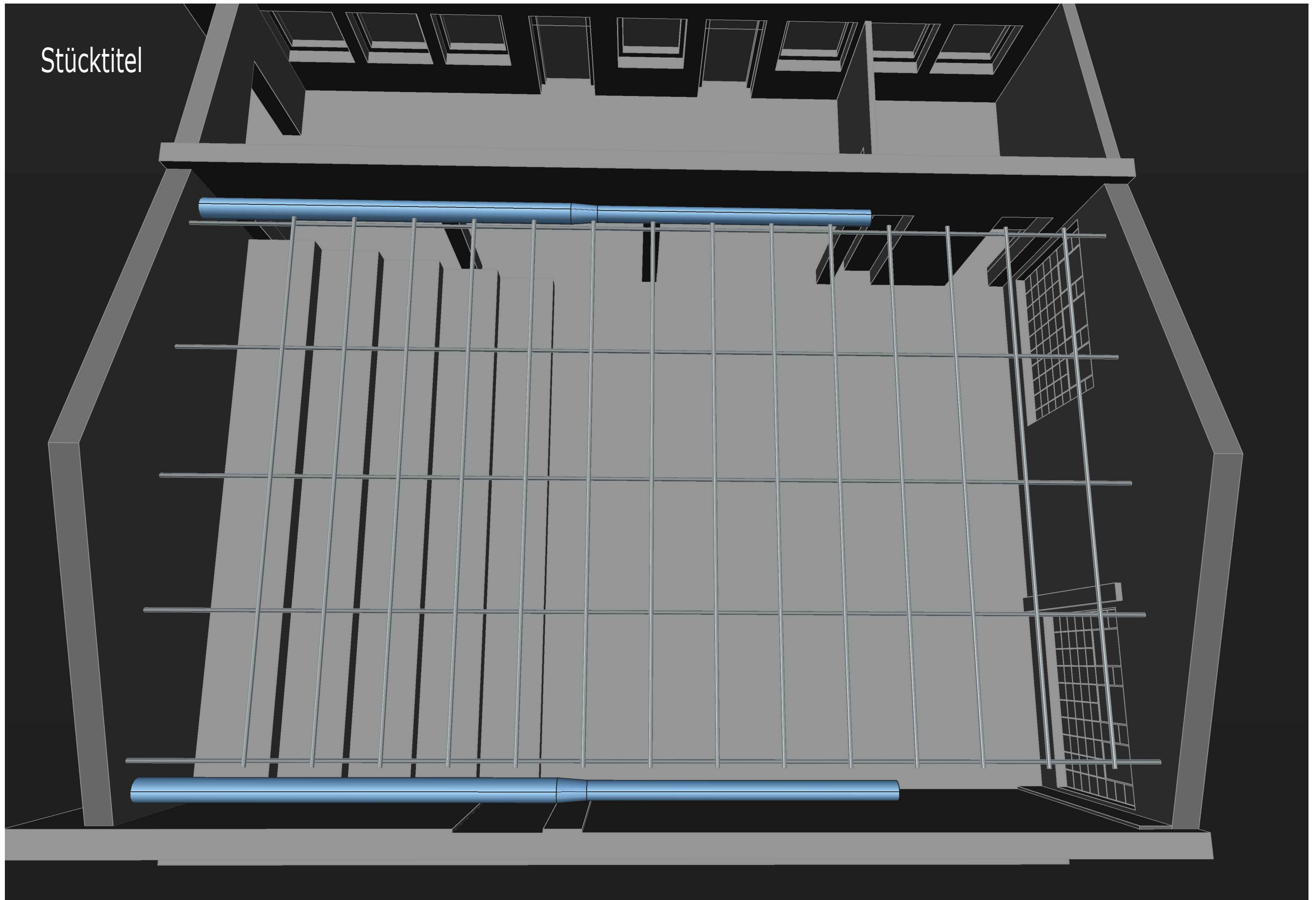
M 1: 100
12 Dez. 2018/13:38 dh



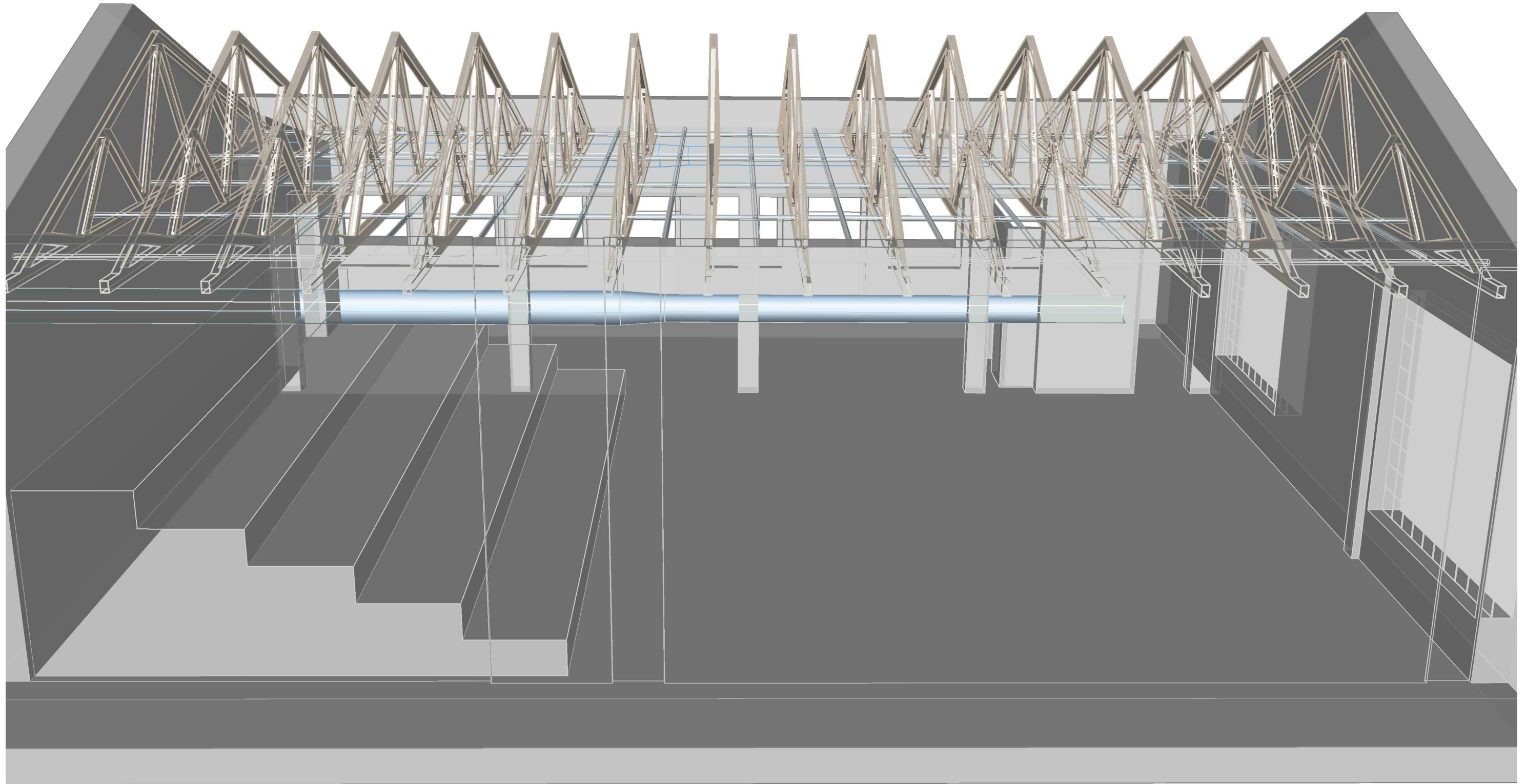
Stüctitel

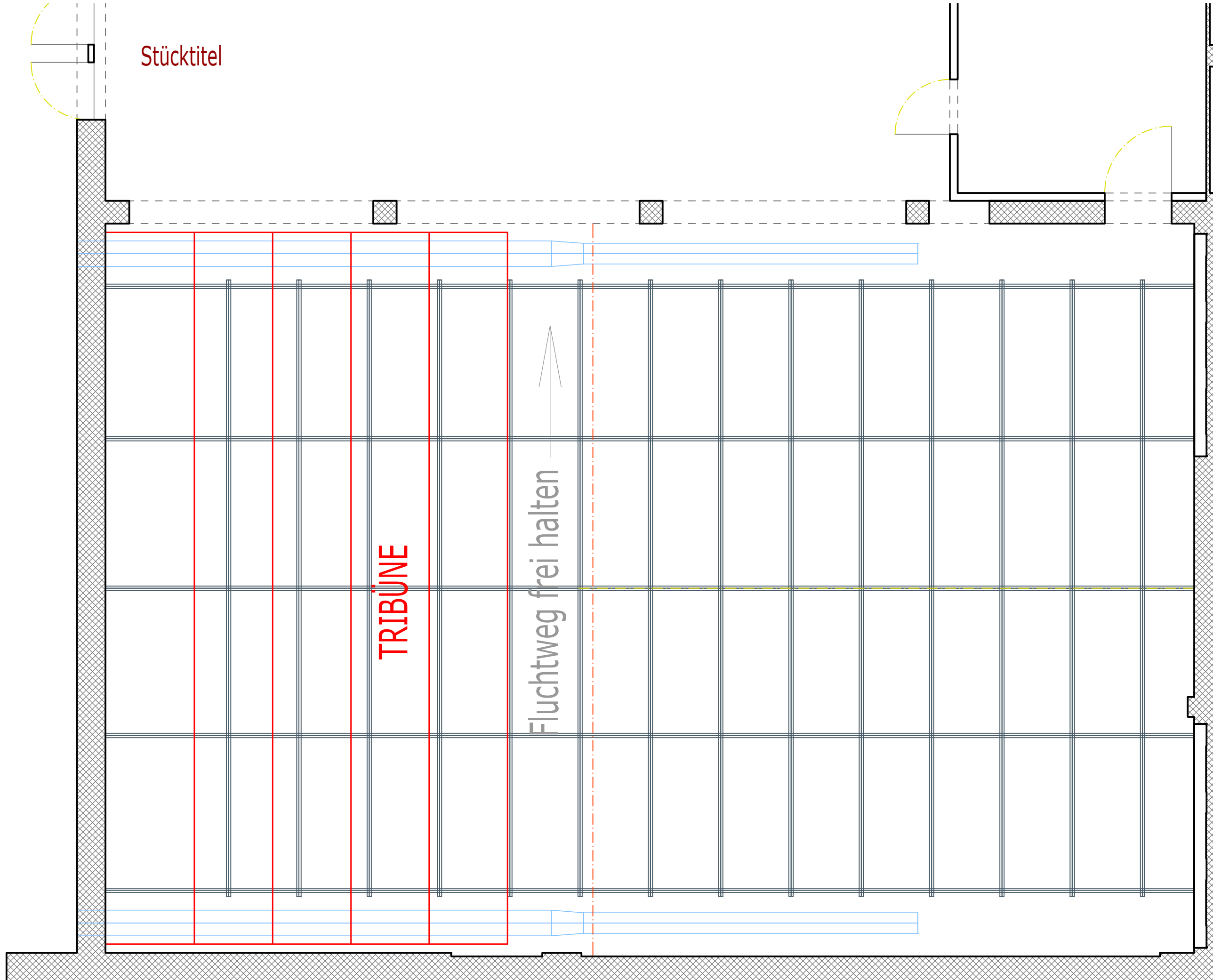


Stükkittel



Stüchtitel





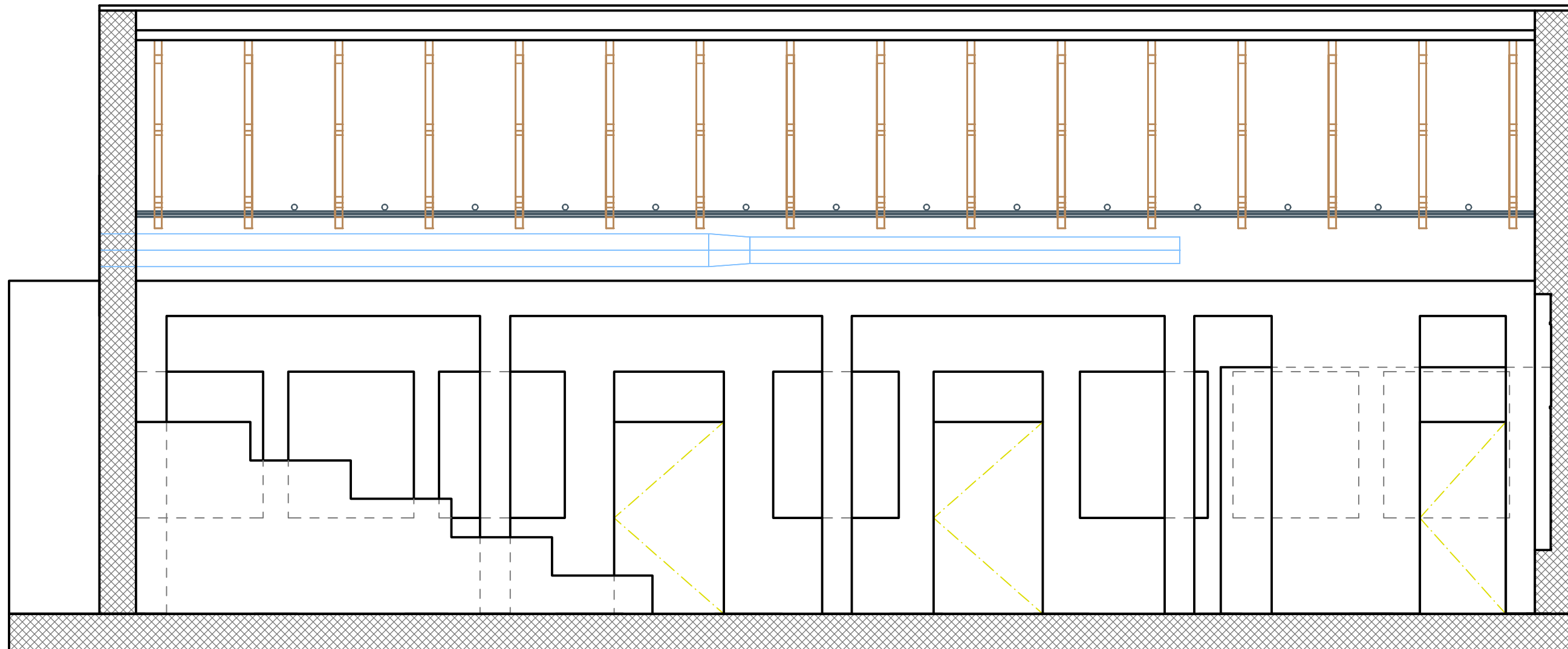
Stüchtitel

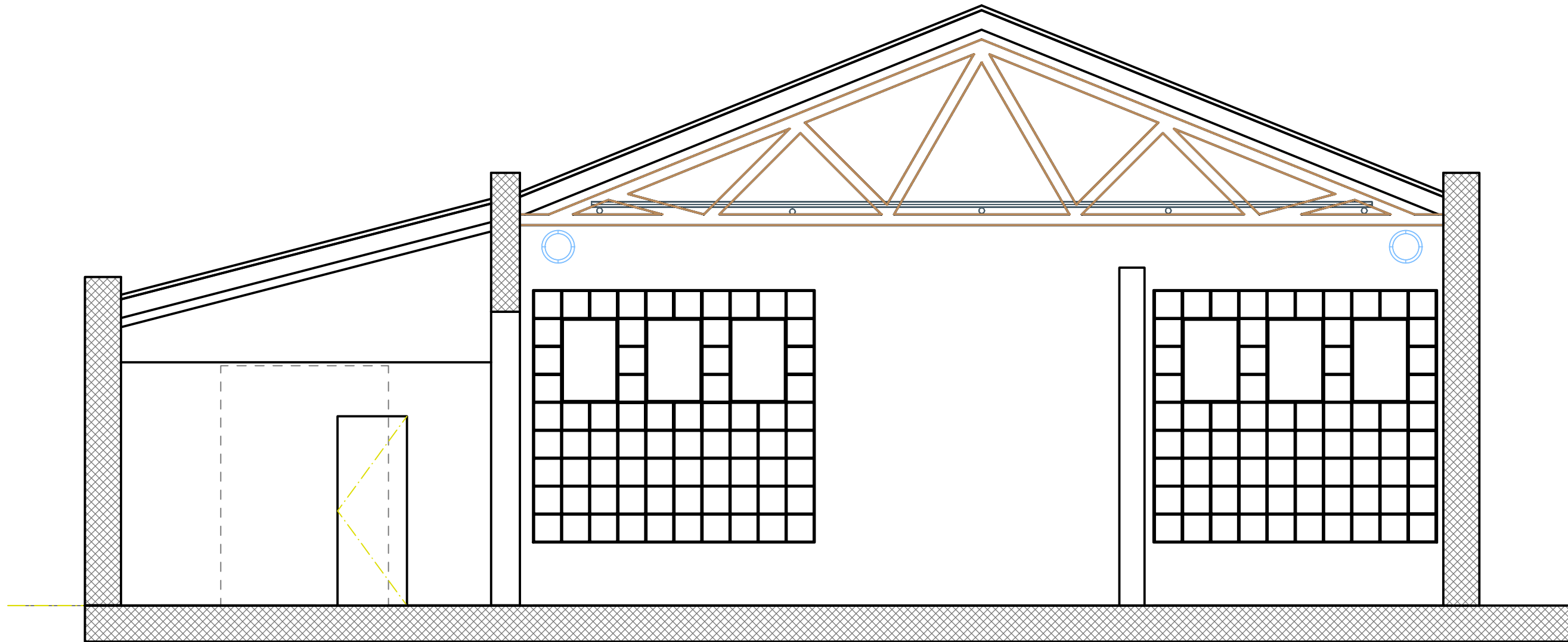
TRIBÜNE

Fluchtweg frei halten

Grundriss

M 1: 50
12 Dez. 2018/13:12 dh





Ansicht

M 1: 50

12 Dez. 2018/13:12 dh